



Centre for  
Public Policy and  
Good Governance  
Government of Uttarakhand



उत्तराखण्ड शासन



# अग्रगामी

## AGRAGĀMI 2.0

SDG ACHIEVERS 2022 | STORIES FROM UTTARAKHAND









# AGRAGĀMI 2.0

SDG ACHIEVERS 2022 | STORIES FROM UTTARAKHAND





**Centre for  
Public Policy and  
Good Governance**  
Government of Uttarakhand



Copyright © 2025 Centre for Public Policy & Good Governance

All Rights Reserved. This book or parts thereof may not be reproduced in any form, stored in any retrieval system, or transmitted in any form by any means-electronic, mechanical, photocopy, recording, or otherwise-without prior written permission of the publisher, except as provided by Government of India copyright law and fair use. For permission requests, please contact the publisher.

#### **Disclaimer**

The content and claims herein have been self-declared by all awardees. The publisher and the editors assume no responsibility for errors, inaccuracies, omissions, or any other inconsistencies herein. The content of this book is for informational purposes only. The use of this book implies your acceptance of this disclaimer.

#### **CPPGG**

Dr. R. Meenakshi Sundaram  
Dr. Manoj Kumar Pant  
Suraj Chand  
Pranav Pant  
Ajay Purohit  
Karunakar Singh

#### **Project Sponsor**

Centre for Public Policy & Good Governance,  
Government of Uttarakhand  
<https://cppgg.uk.gov.in/>

#### **Supported by**

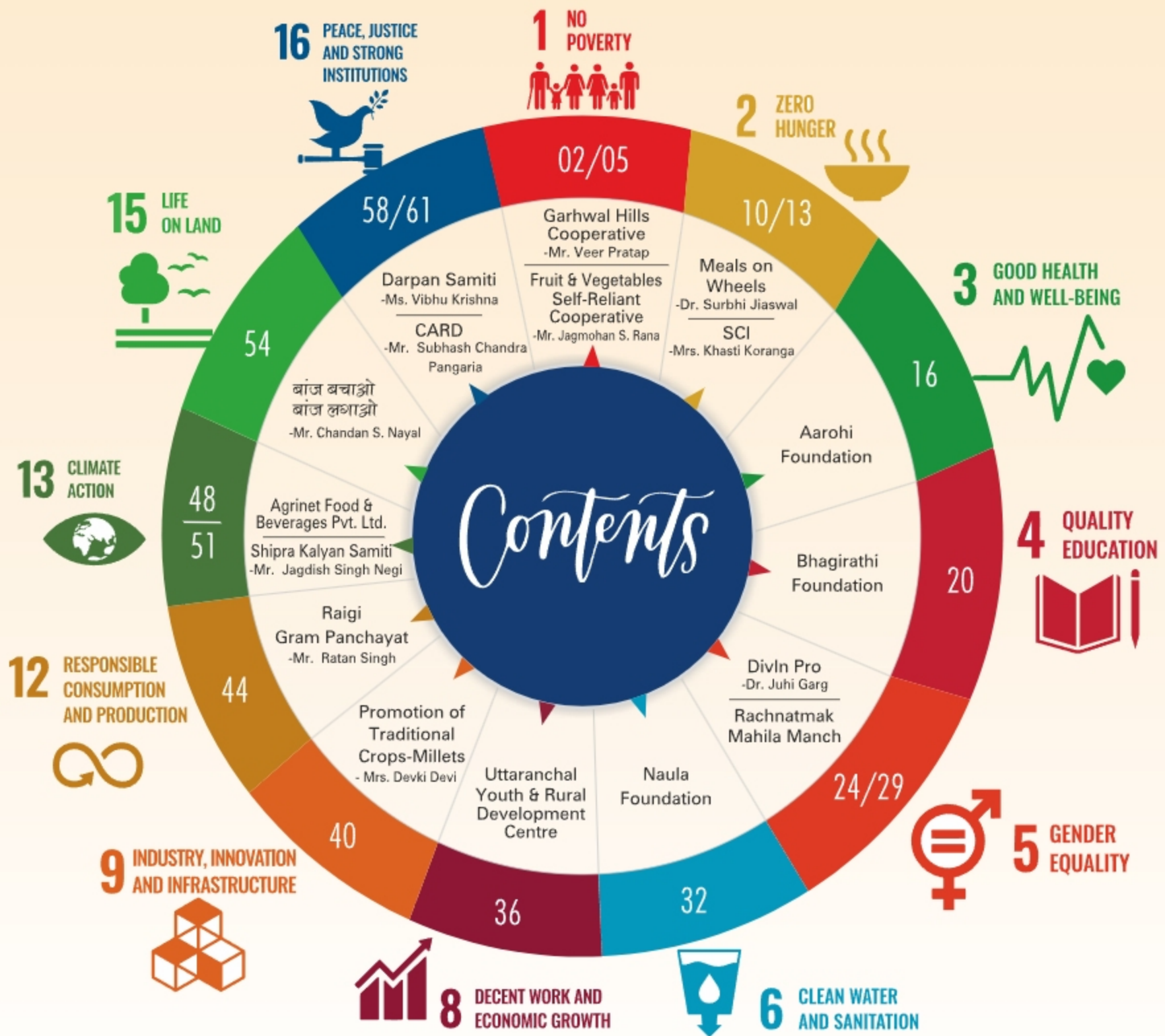
United Nations Development Programme

#### **Production & Printing**

Print Vision, 41-C Rajpur Road, Dehradun  
[www.printvisionindia.com](http://www.printvisionindia.com)















उत्तराखण्ड सचिवालय,  
देहरादून-248001,  
दूरभाष: 0135-2755177(का)  
0135-2650433



पुष्कर सिंह धामी  
मुख्यमंत्री


## संदेश

राज्य सरकार समयबद्ध ढंग से सतत् विकास लक्ष्यों को प्राप्त करने हेतु प्रतिबद्ध है। सरकार द्वारा प्रारम्भ से ही इस दिशा में गंभीर प्रयास किये जा रहे हैं। सतत् विकास लक्ष्यों के कियान्वयन तथा अनुश्रवण हेतु हमने अनेकों संस्थागत कदम उठाये हैं, जिसके फलस्वरूप इस दिशा में उत्तरोत्तर प्रगति देखी जा सकती है।

मुझे यह बताते हुये हर्ष हो रहा है, कि नीति आयोग द्वारा जारी एक रिपोर्ट के अनुसार उत्तराखण्ड को सतत् विकास लक्ष्यों में हुई प्रगति के आधार पर देश में प्रथम स्थान प्राप्त हुआ है, जो कहीं न कहीं हमारी प्रगतिशील नीतियों, शासन-प्रशासन में सरलीकरण एवं समाधान के माध्यम से गुड गवर्नेंस की दिशा में की गयी तमाम पहलों को उजागर करता है।

मेरा मानना है, कि इन महत्वाकांक्षी लक्ष्यों को हासिल करने हेतु समाज के वर्गों का सहयोग आवश्यक है, इन्हे केवल सरकारी कार्यक्रमों एवं योजनाओं में हासिल नहीं किया जा सकता। इस दिशा में सी०पी०पी०जी०जी०, नियोजन विभाग द्वारा अभिनय पहल करते हुये राज्य में सतत् विकास के विभिन्न लक्ष्यों पर अच्छा कार्य कर रहे व्यक्तियों एवं संस्थानों को 'एस०डी०जी० एचीवर्स' पुरस्कार से सम्मानित किया गया है।

सी०पी०पी०जी०जी० द्वारा 'एस०डी०जी० एचीवर्स' द्वारा किये जा रहे विभिन्न नवाचारी पहलों का संकलन 'अग्रगामी 2.0' नामक पुस्तक के रूप में किया गया है। इस कार्य हेतु मैं नियोजन विभाग की टीम को बधाई देता हूँ। मैं आशा करता हूँ कि विभाग द्वारा इस प्रकार के नवोन्मेषी कार्य आगे भी किये जाते रहेंगे।

  
पुष्कर सिंह धामी  
मुख्यमंत्री





राधा रतूड़ी  
मुख्य सचिव

उत्तराखण्ड शासन  
नेताजी सुभाष चन्द्र बोस भवन सचिवालय  
4, सुभाष मार्ग, देहरादून  
दूरभाष : 0135-2712100  
0135-2712200  
(फैक्स) 0135-2712800  
ई. मेल: cs&uttarakhand@nic-in

## संदेश

माननीय मुख्यमंत्री जी के नेतृत्व में सतत् विकास लक्ष्यों को हासिल करने की दिशा में अनेकों महत्वपूर्ण कदम उठाये गये हैं। फलस्वरूप नीति आयोग द्वारा जारी “एस०डी०जी० इंडिया इंडेक्स रिपोर्ट 2023-24” के अनुसार सतत् विकास लक्ष्यों में हुई प्रगति के आधार पर उत्तराखण्ड ने प्रथम स्थान प्राप्त किया है।

सतत् विकास के महत्वाकांक्षी लक्ष्यों को हासिल करने हेतु एक व्यापक दृष्टिकोण में कार्य किये जाने की आवश्यकता है, जिससे कि सरकार के साथ-साथ गैर-सरकारी संस्थाओं, सामाजिक संगठनों, शैक्षणिक शोध संस्थाओं, सी०एस०आर०, महिला संगठनों आदि से प्रभावी समन्वयन स्थापित करते हुये ‘Whole of the Society Approach’ से काम किया जा सके।

मुझे खुशी है, कि सी०पी०पी०जी०जी०, नियोजन विभाग द्वारा राज्य में सतत् विकास की दिशा में कार्य कर रहे 12 संस्थाओं एवं 5 व्यक्तियों को चिन्हित कर मा० मुख्यमंत्री जी द्वारा “एस०डी०जी० एचीवर्स” पुरस्कार से सम्मानित किया गया है।

“एस०डी०जी० एचीवर्स” द्वारा की जा रही पहलों को ‘अग्रगामी 2.0’ के रूप में प्रकाशित करने हेतु मैं सी०पी०पी०जी०जी० तथा यू०एन०डी०पी के प्रयासों सराहना करती हूँ, साथ ही ऐसे नवाचारी कार्यों को नेतृत्व प्रदान करने हेतु आर० मीनाक्षी सुन्दरम, प्रमुख सचिव, नियोजन, डॉ० मनोज कुमार पंत, अपर मुख्य कार्यकारी अधिकारी, सी०पी०पी०जी०जी० तथा उनकी पूरी टीम के अथक प्रयास की सराहना करती हूँ।

  
राधा रतूड़ी  
मुख्य सचिव





Planning Department,  
2nd Floor Vishwakarma Bhavan,  
Uttarakhand Secretariat,  
4-Subhash Road, Dehradun,  
Uttarakhand



**Dr. R. Meenakshi Sundaram, IAS**  
Principal Secretary, Planning

## Preface

I am delighted that the Centre for Public Policy and Good Governance (CPPGG), in collaboration with the United Nations Development Program (UNDP), has been fostering innovations and best practices. Through initiatives like the SDG Achievers Awards, we aim to not only recognize the significant contributions of the changemakers but also to strengthen collaboration with the community-based organizations to learn from each other and ensure sustainable development of the State.

The Hon'ble Chief Minister felicitated 17 organizations and individuals with the SDG Achievers Awards who have been engaged in implementation of various SDGs at the grassroots level. The selection process of the organizations and individuals was stringent and transparent, including rigorous field verification of how their interventions are engaging the community for promoting sustainable development.

I extend my appreciation to the esteemed jury led by Sh. N Ravishankar, former Chief Secretary, Govt. of Uttarakhand. I convey my thanks to Dr. Manoj Kumar Pant, Addl. Chief Executive Officer, CPPGG, and his team for their commendable work.

I hope the publication of **Agragami 2.0** will not only celebrate the achievements of the SDG Awardees but also inspire others. Many of the interventions showcased in this publication can serve as replicable models to improve the quality of life for people across the State.



**Dr. R. Meenakshi Sundaram**



CPPGG, Planning Department,  
Vishwakarma Bhavan,  
Uttarakhand Secretariat,  
4-Subhash Road, Dehradun,  
Uttarakhand



**Dr. Manoj Kumar Pant**  
Additional Chief Executive Officer

## Acknowledgement

I am pleased to present the second edition of **Aragami**, highlighting innovations and best practices that accelerate the achievement of Sustainable Development Goals (SDGs). These ambitious goals cannot be realized solely through government efforts; they require collective action from all stakeholders. As the nodal agency for SDG acceleration in the State, the CPPGG has been collaborating with academic institutions, private sector; CSR, CBOs, NGOs, and individuals who are driving meaningful change in society.

CPPGG, in collaboration with the UNDP, has identified the inspiring changemakers and recognized them as '**SDG Achievers**'. The broad vision behind the SDG Achievers Awards is to appreciate the efforts of organizations and individuals and to promote best practices so that these can be suitably replicated by others.

The selection process for SDG Achievers was stringent and transparent. CPPGG invited nominations through an open advertisement, attracting applications from institutions, CSR, private enterprises, academia, CBOs, NGOs, and individuals. Following a thorough desk review, field visits were conducted to assess the impact of their work. A shortlist was presented to an esteemed jury for final selection. After a comprehensive evaluation, twelve organizations and five individuals were chosen, and the Hon'ble Chief Minister of Uttarakhand felicitated them.

I extend my sincere gratitude to Sh. R Meenakshi Sundaram, Principal Secretary (Planning), GoUK/CEO-CPPGG, for his unwavering guidance. I express my high appreciation to the distinguished jury members: Sh. N Ravishankar, Ex-Chief Secretary, Govt. of Uttarakhand;



Prof. Surekha Dangwal, Vice Chancellor, Doon University; Dr. Sharad Singh Negi, Vice Chairman, Palayan Aayog, Uttarakhand; and Ms. Shikha Ghildiyal, Development Practitioner, for their invaluable contributions in selecting the SDG Achievers.

I am deeply grateful to Ms. Isabelle Tschan, Deputy Resident Representative, UNDP; Ms. Meenakshi Kathel, Chief Policy Adviser, UNDP, who came to Dehradun for the award ceremony. I convey my thanks to Dr. Pradeep Mehta, State Head, UNDP, Uttarakhand, for his support.

A special mention to the dedicated CPPGG team, particularly Sh. Suraj Chand, Ex- Communication Analyst, and Sh. Pranav Pant, UNV, for leading the SDG Achiever Award event. I also acknowledge the valuable contributions of Sh. Ajay Purohit, MIS Expert; Sh. Karunakar Singh, SDG Localization Analyst; and Sh. Shailendra Kumar, M&E Expert, in field validation efforts.

Finally, I express my deepest appreciation to the SDG Achievers, who have been at the forefront of testing innovations, adopting new development models for betterment of the society. Their dedication and impact inspire us all.



**Dr. Manoj Kumar Pant**

# UTTARAKHAND SDG Achievers Award



The Uttarakhand SDG Achievers Award organised by the Centre for Public Policy and Good Governance (CPPGG), in collaboration with UNDP, aimed to recognise exemplary initiatives contributing to the achievement of SDGs in the state. The application process conducted until January 30, 2023, garnered 47 diverse entries from various stakeholders. The selection process involved three phases under the guidance of ACEO, CPPGG:

## PHASE 1 : Preliminary Review

Team CPPGG shortlisted 40 applicants based on criteria of relevance, impact, effectiveness, sustainability and scalability. Exclusions included improperly filled forms, initiatives including government agencies implementing regular interventions.

## PHASE 2 : Physical Validation

A joint team from the Directorate of Economics & Statistics and CPPGG conducted field visits, assigning scores to nominees based on validation forms. The shortlisted applicants were presented to the jury for the second stage selection.

## PHASE 3: Jury Selection

**The Selection Process included Two Stages:** The presentations by 40 nominees on July 28, 2023 were shortlisted to 22 nominees. The jury met the shortlisted nominees on 10-11 August, 2023 and 17 nominees were selected as SDG Achievers 2022.

A jury, approved by ACS Planning included notable members:



**Mr. N. Ravi Shankar**  
Ex - Chief Secretary,  
Uttarakhand,



**Prof. Surekha Dangwal**  
Vice-Chancellor,  
Doon University,  
Dehradun



**Dr. Sharad Singh Negi**  
Vice-Chairperson,  
Uttarakhand Rural Development  
and Migration Commission



**Ms. Shikha Ghildiyal**  
Development Practitioner



## SDG Achievers Award Ceremony

The SDG Achievers Award Ceremony was organised on 13 September, 2023 for celebrating the remarkable contributions of 17 individuals and organisations in advancing the SDGs in Uttarakhand. The event was held at Dehradun with the Honourable Chief Minister, Shri Pushkar Singh Dhami as the Chief Guest, and Ms. Isabelle Tschan, Deputy Resident Representative of UNDP India, as a Special Guest.

Uttarakhand's remarkable progress on the SDG Index Ranking, moving from 9th position in 2019 to 3rd position in 2022, reflects its commitment to sustainable development. In a bid to enhance SDG localisation, the Hon'ble Chief Minister launched initiatives including district-wise SDG rankings, and the observance of

SDG Week with various awareness programmes and campaigns.

The SDG Achievers Award Ceremony showcased the dedication and innovation of those contributing to the SDGs in Uttarakhand, emphasising their pivotal role in building a sustainable and equitable future. The successful event highlighted Uttarakhand's steadfast commitment to global goals and the collective dedication of its people and organisations.







## Prize Winners



Garhwal Hills Cooperative | Mr. Veer Pratap



Fruit & Vegetables Self-Reliant Cooperative | Mr. Jagmohan S. Rana



Meals on Wheels | Dr. Surbhi Jiaswal



System of Crop Intensification (SCI) | Mrs. Khasti Koranga



Aarohi Foundation



Bhagirathi Foundation



Divin Pro | Dr. Juhi Garg



Rachnatmak Mahila Manch





NAULA Foundation



Uttaranchal Youth & Rural Development Centre



Promotion of Traditional Crops-Millet | Mrs. Devki Devi



Raigi Gram Panchayat | Mr. Ratan Singh



Agrinet Food & Beverages Pvt. Ltd.



Shipra Kalyan Samiti | Mr. Jagdish Singh Negi



बांज बवाओ बांज लगाओ | Mr. Chandan Singh Nayal



Darpan Samiti | Ms. Vibhu Krishna



CARD | Mr. Subhash Chandra Pangaria





1 NO  
POVERTY



# NO POVERTY

Aims to end poverty in all its manifestations by 2030 and ensure social protection for the poor and vulnerable, increase access to basic services and support people harmed by climate-related extreme events and other economic, social and environmental shocks and disasters.





# Garhwal Hills Cooperative

Falswari Village,  
Pauri Garhwal

Mr. Veer Pratap



Nestled in Falswari village in Pauri Garhwal, the Garhwal Hills Cooperative is on an ambitious journey to combat the foundational challenge of poverty (SDG 1) through an innovative and sustainable approach. The founder Mr. Veer Pratap recognised the untapped potential for Button Mushroom Production in the mountainous regions. Though blessed with a favourable climate, the area lacked compost manufacturing units, thus hindering local farmers and self-help groups from meeting the soaring demand for mushrooms in Uttarakhand. Therefore, the dream was born to establish a Compost Producing Unit to address the critical need, and also provide sustainable livelihoods.





## THE WORK

At the core of this transformative endeavour is a state-of-the-art Compost Producing Unit exclusively tailored for mushroom cultivation. Boasting of an impressive capacity of obtaining 15 tonnes of compost every 20 days, the Garhwal Hills Cooperative underscores its commitment to uplifting the economic landscape of the region. Beyond mere production, the Mushroom Growth Centre doubles up as a training facility, empowering local growers with essential skills and

ensuring a holistic approach to sustainable agriculture.

Employing 10 local women and 4 men directly, this initiative injects economic growth at the grassroots level. An additional 45 farmer families indirectly benefit, making a substantial contribution to poverty reduction. Initiated with government support, the project aligns seamlessly with the global vision of eradicating poverty in all its forms.

“

## FUNDAMENTAL CHALLENGES

Despite the promising prospects for Button Mushroom Production in the mountainous terrain of Garhwal, the absence of Compost Manufacturing Units presented a significant obstacle. Local farmers and self-help groups were thwarted in their attempts to contribute to the mushroom market due to the lack of essential infrastructure for compost production. Recognising this critical gap became the impetus for the visionary founder, Mr. Veer Pratap, to embark on the journey of establishing a Compost Producing Unit. Overcoming logistical challenges and ensuring the consistent supply of high quality compost, posed initial hurdles that the Garhwal Hills Cooperative tackled with determination and strategic planning.

”

## IMPACT ON THE COMMUNITY

The Mushroom Growth Centre emerges as a catalyst for positive change in Pauri Garhwal. By enhancing employment opportunities and providing a source of income, it empowers the community while imparting skills that extend beyond mushroom cultivation, thus fostering sustainable livelihoods. The initiative not only opens market avenues for local growers but also elevates their social standing.

## SUSTAINABILITY MEASURES & FUTURE PROSPECTS

Garhwal Hills Cooperative's foresight is evident in the sustainable infrastructure, machinery and equipment dedicated to long term compost production. This ensures a consistent supply for mushroom cultivation and stable employment for the local workforce. By offering employment and skilling opportunities to both women and men, the initiative ensures enduring prosperity for the community.

Well-researched market availability further cements the project's viability and long term impact. The Mushroom Growth Centre exhibits substantial potential for upscaling production to meet the region's growing demands for both compost and skilled labour. With a strategic focus on local needs, it could serve as a model for similar projects, not only in the immediate vicinity, but also in neighbouring areas facing analogous challenges.

The Centre's ability to address comprehensive needs and tap into the market, positions it as a scalable and replicable solution. Its success story holds the promise of inspiring similar endeavours, creating a network of sustainable agricultural practices contributing to poverty alleviation on a broader scale.



The establishment of a dedicated Compost Producing Unit itself is a pioneering step, addressing the primary challenge hindering local mushroom cultivation. The Centre's remarkable capacity to produce 15 tonnes of compost every 20 days is a testament to the commitment of scalability and meeting the region's demands.

Additionally, the Mushroom Growth Centre goes beyond mere production; it serves as an integrated training facility. This innovative approach imparts essential skills to local growers, ensuring the sustainability of mushroom cultivation in the long run. By combining production with education, the Centre fosters a comprehensive model that not only boosts economic growth but also empowers the community with the knowledge and expertise needed for sustainable livelihoods.



# Fruit and Vegetables Self-Reliant Cooperative

Yamuna Valley,  
Uttarakashi

Mr. Jagmohan Singh Rana



Rana emerges as a trailblazer, reshaping the agricultural narrative in Yamuna Valley in Uttarakashi. His resolute commitment to transforming livelihoods and alleviating poverty intricately weaves into the fabric of the Yamuna Valley, where over 1250 farmers now reap the benefits of his initiatives.



## THE WORK

His visionary approach to sustainable agriculture comprises of several dynamic initiatives; the promotion of High Density Apple Cultivation, the establishment of a Processing Unit for unsold apples, and the formation of the Yamuna Valley Fruit and Vegetables Self-Reliant Cooperative. These initiatives collectively contribute to realising SDG 1 by enhancing the value chain, increasing income, and promoting sustainable practices.

Rana's initiatives strategically advance agricultural businesses in the Yamuna Valley by focussing on value addition and collective marketing. The promotion of High Density Apple Cultivation not only doubles farmer revenue, but also elevates the economic prospects for the entire community. The cooperative framework ensures collective empowerment and poverty reduction in the long run.



“

### FUNDAMENTAL CHALLENGES

The shift to High Density Apple Cultivation required overcoming scepticism and resistance to change within the farming community. Adapting traditional practices to embrace this innovative approach demanded patience, education and persistent efforts to demonstrate the long-term benefits.

”



## IMPACT ON THE COMMUNITY

The introduction of High Density Apple Cultivation is transformative for the agricultural landscape. The innovative approach featuring 30-35 grafted apple trees in 1 Nali area compared to the traditional 8 apple trees/Nali, substantially increases yields. This transformation is not merely economic but also cultural, as around 21 farmers in Himrol village have embraced this change.

The shift to new grafted apple varieties results in a remarkable increase in revenue from Rs. 1000/Box to Rs. 4000/Box. Simultaneously, Rana's proactive approach to utilising unsold apples for juice and jam production not only reduces food waste but also generates additional income, fortifying the processing business in the distant Yamuna Valley.

The Yamuna Valley Fruit and Vegetable Self-Reliant Cooperative plays a pivotal role in improving livelihoods for over 1250 farmers. By fostering collective marketing efforts, Rana ensures that the benefits of these initiatives are widely distributed among the community.





## SUSTAINABILITY MEASURES & FUTURE PROSPECTS

Jagmohan Singh Rana's commitment to sustainability extends beyond the immediate impact of his initiatives. The business model for juice and jam production is designed for long term viability, ensuring that the benefits continue into the future as well. The cooperative efforts are entrenched in a sustainable framework, emphasising collective marketing as a cornerstone for enduring prosperity.

His journey from farmer to entrepreneur is not merely a personal triumph but a community endeavour towards sustainable agriculture and poverty reduction. His initiatives showcase the transformative power of visionary leadership in creating a more resilient and prosperous agricultural landscape.



At the heart of Rana's success lies the innovation of High Density Apple Cultivation, a departure from conventional methods. The introduction of 30-35 grafted apple trees in 1 Nali area compared to the traditional 8 apple trees/Nali, showcases a pioneering spirit that significantly increases yields and transforms the economic dynamics for local farmers. His strategic use of unsold apples for juice and jam production adds another layer of innovation, by not only minimising food waste, but also creating a sustainable revenue stream.





# ZERO HUNGER

Aims to end hunger and all forms of malnutrition by 2030 and it also commits to universal access to safe, nutritious and sufficient food at all times of the year





# Meals on Wheels

Dehradun

Dr. Surbhi Jiaswal



Dr. Surbhi Jaiswal spearheads a compassionate crusade against hunger through her initiative, 'Meals on Wheels' in Dehradun. This noble mission transcends boundaries, directly addressing SDG 2 while also making a profound impact on SDG 3 and 4, leaving an indelible mark on the health and well-being of slum children in the region.

## THE WORK

'Meals on Wheels' is not merely a food distribution programme; it is a lifeline for the marginalized groups. She and her dedicated team cook nutritious meals and serve them free of charge to vulnerable populations including those living on the streets,

the physically challenged, mentally challenged individuals and malnourished children. The initiative goes beyond eliminating hunger, besides tackling broader issues related to health, education, and well-being.



## INITIATIVE HIGHLIGHTS

- **Nutrient Rich Meal Planning**

'Meals on Wheels' focuses on cooking and distributing nutritious and well balanced food, thereby addressing the root cause of hunger related issues. This innovative approach ensures that the recipients, especially malnourished children, receive meals contributing to their overall health.

- **Emergency Response During COVID-19**

Demonstrating adaptability, the initiative distributed 17,600 cooked meals during the COVID-19 pandemic. This rapid response provided immediate relief to the vulnerable population, showcasing the programme's ability to overcome unforeseen challenges.



- **Inclusive Food Helpline**

The Food Helpline adds an inclusive dimension, allowing individuals to donate excess food or seek nutritious meals in times of distress. This innovative approach fosters community engagement, shared responsibility, and makes the programme more sustainable and scalable.

- **Proactive Food Wastage Reduction**

The programme takes a proactive approach to reduce food wastage by collaborating with event venues for collection of excess food from weddings and parties. This not only minimises waste but also channels surplus resources to those in need, showcasing a holistic and sustainable solution.



## IMPACT ON THE COMMUNITY

The impact of "Meals on Wheels" is profound with 1,07,000 meals served to 21 slums in Dehradun. Beyond numbers, the initiative has collected and distributed 3500 Kgs of leftover food, preventing wastage while providing sustenance to those in need.

## SUSTAINABILITY & FUTURE PROSPECTS

'Meals on Wheels' isn't just about serving food; it's a shining example of the power of compassion and community care. Surbhi's initiative goes beyond eradicating hunger; it nourishes the spirit of collective responsibility, compassion and hope, embodying the essence of the Sustainable Development Goals. The initiative is not constrained by geographical boundaries. Its scalability is evident by its potential to be replicated in other regions facing similar challenges and the Food Helpline adds an inclusive dimension to its scalability.



# System of Crop Intensification (SCI)

Bageshwar

Mrs. Khasti Koranga



Mrs. Khasti Koranga is transforming the agricultural landscape and fostering collective resilience among the women farmers in the Bageshwar District of Uttarakhand. Her pioneering efforts as a master trainer in agriculture activities, particularly in the System of Crop Intensification (SCI), has not only contributed to SDG 2, but has also spurred a wave of self-reliance among women farmers in the hill state.



## THE WORK

Khasti Koranga's impact is profound, having trained 1000 women farmers from over 20 villages in the System of Crop Intensification. This initiative is not just about improving agricultural practices; it's a catalyst for change. Beyond SCI, she has organised village women into Self-Help Groups (SHGs), thus providing a platform for collective livelihoods, savings and addressing various issues. Her handholding support extends to 2500 women linked with these SHGs.

The initiative addresses SDG 2 by making significant strides in achieving Zero Hunger. Her efforts are not only focussed on improving agricultural productivity but also on creating sustainable

livelihoods for women in the hill state. The reverse migration triggered by this initiative highlights its relevance to SDG 3 as well, contributing to improved health and well-being.

The sustainability of Mrs. Koranga's initiative is evident in its multifaceted approach. Not only does the System of Crop Intensification enhance agricultural sustainability, but the organisation of women into Self-Help Groups ensures the longevity of collective efforts. The support from People's Science Institute (PSI), Dehradun has added a crucial layer of sustainability, as well as created a framework for ongoing development programmes. Her role as a master trainer for various initiatives further solidifies the long term impact.



## COMMUNITY IMPACT

The adoption of SCI processes by villagers has yielded remarkable results reducing input costs and increasing net income by up to 70 percent. Around 2500 women are benefiting from different activities, creating a ripple effect that extends beyond agriculture to include watershed management, organic farming, Panchsutra in SHGs and non-farm activities like handicrafts.

The recognition of Mrs. Koranga with the Best Farmer Award at the International Conference on System of Crop Intensification for Climate-Smart Livelihood and Nutritional

Security (ICSCI 2022) underscores the transformative impact of her efforts. It serves not only as a testament to her dedication but also as an inspiration for others to follow suit.

In conclusion, her initiative transcends traditional agricultural practices; it is a blueprint for community driven development. By empowering women through education, collective action and sustainable farming practices, she has not only contributed to SDG 2 but has sown the seeds for a more resilient and self-reliant hill state community.





3 GOOD HEALTH  
AND WELL-BEING



## GOOD HEALTH AND WELL-BEING

Aims to prevent needless suffering from preventable diseases and premature death by focussing on key targets that boost the health of a country's overall population. Regions with the highest burden of disease and neglected population groups and regions are priority areas





# Aarohi Foundation

Saitoli, Bhimtal Block,  
Nainital



In the small village of Saitoli in Bhimtal block of Nainital District, the Aarohi Foundation emerges as a stalwart guardian of health, ensuring that the residents of more than 80 villages in Nainital and Almora have access to quality healthcare. With a comprehensive approach that includes Aarohi Arogya Kendra, Amrit Clinic and a Mobile Medical Unit (MMU), the foundation exemplifies an unwavering commitment to achieving SDG 3 - Good Health and Well Being.



## INITIATIVE OVERVIEW

Founded in 1992 in Saitoli Village of Nainital District to address the challenges of quality education, healthcare and livelihood in the hilly terrains of Uttarakhand. Aarohi Foundation's multifaceted initiative addresses healthcare challenges through a range of facilities. The foundation operates a 5 bed hospital in Saitoli Village, a Mobile Medical Unit equipped with essential facilities such as a Path Lab, USG, ECG, and a Pharmacy. The Aarohi Arogya Kendra, operational for 30 years, provides 24x7 health facilities in Saitoli, benefiting 25 villages. Additionally, the Amrit Clinic,

set up to operate in the Gram Panchayat building, Suni will extend its services to 50 villages.

The initiative ensures the relevance of SDG 3 by assuring 24x7 quality primary and secondary healthcare services. It plays a crucial role in providing emergency health services to a catchment area of around 80 villages, benefiting approximately 40,000 people.

## IMPACT ON THE COMMUNITY

In 2022-23, the Mobile Medical Unit was operational in Nainital and Almora districts, conducting 101 camps and benefiting 3718 patients. The Aarohi Arogya Kendra recorded 2758 OPD visits and completed 66 IPD cases. Four Surgical camps were also held during this time, showcasing the diverse range of medical services provided by the foundation.

It's achievements have earned it prestigious awards including the Indian CSR Awards - Top 20 NGO's of the year 2022 and the Lion Subhash Lakhotia Services Award from Lion Club in 2018.



“

## FUNDAMENTAL CHALLENGES

To appreciate the transformative journey of Aarohi Foundation, it's essential to acknowledge the challenges faced in addressing healthcare disparities in the hilly terrains of Uttarakhand. Overcoming logistical hurdles, ensuring consistent medical supplies, and reaching remote areas pose ongoing challenges. The Foundation's Mobile Medical Unit (MMU) enables healthcare delivery to the most remote areas, thereby addressing the challenge of reaching inaccessible locations.

”





## SUSTAINABILITY & FUTURE PROSPECTS

The sustainability of Aarohi Foundation's healthcare initiatives is rooted in a fully equipped hospital with resident doctors, dentists, laparoscopic surgeries facilities, nurses, a pharmacy and an ambulance service. Remarkably, the foundation manages around 25% of human resource costs through low-cost service charges, ensuring financial sustainability without compromising on the quality of care.

It's unwavering commitment to bridging healthcare gaps in the hills goes beyond immediate medical assistance; it represents a beacon of hope for the residents of Nainital and Almora. By exemplifying the principles of SDG 3, the foundation is not just providing healthcare but nurturing a healthier and more resilient community for generations to come.





# QUALITY EDUCATION

Aims at ensuring inclusive and equitable quality education and promoting lifelong learning opportunities for all. This goal ensures that all girls and boys complete free primary and secondary schooling by 2030





# Bhagirathi Foundation

Bhimtal,  
Nainital



In the picturesque town of Bhimtal in Nainital District, the 'Bhagirathi Foundation' endeavours to provide crucial financial aid and needful support to needy students pursuing higher education or vocational courses, ensuring that no one is left behind in the pursuit of knowledge.



## THE WORK

Bhagirathi Foundation's commitment to SDG 4 manifests in two impactful ways: providing urgent financial assistance for needy students pursuing higher studies or vocational courses, and offering essential support to rural students in the form of copies, reading materials and other felt needs. The foundation operates solely on the generous donations of its members, emphasizing the importance of collective responsibility in making quality education accessible to students in need.

While the numbers of beneficiaries may seem small objectively, the subjective immanence of the assistance provided by Bhagirathi Foundation cannot be understated. For those who have lost all hope or lack access to institutional assistance, even small gestures can be life changing. The foundation's focus on both higher studies and primary classes, demonstrates a holistic approach to addressing educational needs at various levels.





## IMPACT ON THE COMMUNITY

The impact of foundation's initiatives is best understood through the personal narratives of the beneficiaries. Interactions with two parents in Nai villages revealed profound gratitude for the timely assistance provided by the foundation. These instances highlight the real and tangible difference made in the lives of individuals and families, echoing the transformative power of education.



## SUSTAINABILITY MEASURES

The foundation currently relies on the donations of its members, providing a steady stream of support for its initiatives. While the organisation initially did not articulate a long-term vision for sustainability, engagement with CPPGG (while filling out forms) has prompted them to consider and articulate a sustainable vision for the future. This reflects their commitment to make a lasting impact through their efforts.

In conclusion, the foundation's efforts extend beyond mere financial assistance; they represent a lifeline for students striving for a brighter future. By embodying the principles of SDG 4, the foundation is not just filling educational gaps; it is nurturing the roots of knowledge and empowerment in the hills, ensuring that educational aspirations can be realised for generations to come.

5 GENDER  
EQUALITY



## GENDER EQUALITY

Aims to achieve gender equality by ending all forms of discrimination, violence and any harmful practices against women and girls in the public and private spheres. It also calls for the full participation of women and equal opportunities for leadership at all levels of political and economic decision - making





# DivIn Pro

Dehradun

Dr. Juhi Garg



In the vibrant city of Dehradun, DivIn Pro stands as a beacon of empowerment, embodying the principles of SDG 5. As an all women support centre and an award winning start-up, DivIn Pro is dedicated to serving marginalised women of Uttarakhand by breaking barriers and transforming lives.

## THE WORK

It is not just a support centre; it is an impact driven force for positive change. This start-up, recognised by Startup India and Startup Uttarakhand, pioneers initiatives such as the Menstrual Helpline and Career Counselling Helpline, thereby directly addressing the unique challenges faced by women and girls in the deep hilly terrains of Uttarakhand.

- The Menstrual Helpline offering hands-on training on menstrual cup usage, aims to make more villages pad-free, positively impacting the women from marginalised sectors.
- The Career Counselling Helpline focuses on empowering girls, addressing gender disparities, and contributing to women's economic and social advancement.



“

### FUNDAMENTAL CHALLENGES

To appreciate the transformative journey of DivIn Pro, it's essential to acknowledge the challenges faced in addressing gender disparities in the hilly terrains of Uttarakhand. Socio-cultural barriers, limited access to education, and entrenched stereotypes pose ongoing challenges that DivIn Pro actively addresses.

”



## ALL WOMEN CONTACT AND SUPPORT CENTRE

It's standing for Professionals from Diverse and Inclusive backgrounds, economically empowers marginalised sectors by providing dignified employment opportunities to women. This approach addresses diverse gender challenges within the organisation.



## MENSTRUAL HELPLINE

It operates the only Menstrual Helpline in India for women from marginalised sectors in hilly areas of Uttarakhand. Through their 'cupverted' initiative, they have impacted lives and promoted sustainable hygienic menstrual practices.

## CAREER COUNSELLING HELPLINE

Aiming to empower students in choosing the right career, especially in the deep hilly terrains of Uttarakhand, it runs a career counselling helpline for students contributing to a brighter future for marginalised girl children.



## SUPPORT FOR WOMEN ON BREAK

It has impacted the lives of women from marginalised sectors, which includes those on a career break, single women, married women seeking a career change, and students, through skill development and better career opportunities.





## IMPACT ON THE COMMUNITY

The reach of its initiatives is impressive with 23,000 women benefiting from the Menstrual Helpline and 60,000 girls empowered through Career Counselling. The tangible impact extends beyond individual lives, resonating across communities and breaking barriers hindering the progress of women and girls in hilly terrains.

Underpinning their initiatives is a commitment to the Diversity and Inclusion agenda, providing dignified employment opportunities to women from marginalised sections of the society. It creates safe spaces for women, children and elders through empathetic and relevant conversations.



## SUSTAINABILITY MEASURES & FUTURE PROSPECTS

DivIn Pro's commitment to sustainability is evident in its long lasting impact on the health and education of women. By providing essential support through helplines and hands-on training, the initiative creates a ripple effect that contributes to the enduring well-being of communities.

The numerous accolades received, including the **Best Start-up 2022** UCOST, Govt. of Uttarakhand and **STEP Awards** validates the significance and impact of their initiatives.

In conclusion, it is not just a support centre; it is a catalyst for change, breaking barriers and empowering women and girls in the hilly terrains of Uttarakhand. By aligning with SDG 5, the initiative is not only transforming individual lives but contributing to a more equitable and sustainable future for communities, and the coming generations.



It's innovative approach lies in addressing not only the immediate needs but also the deeper challenges faced by women in the region.

- The Menstrual Helpline's 'cupverted' initiative is ground breaking, promoting sustainable and hygienic menstrual practices and breaking cultural taboos.
- The Career Counselling Helpline goes beyond conventional career guidance, catering specifically to the unique challenges faced by girls in the deep hilly terrains.

# Rachnatmak Mahila Manch

Almora



The Rachnatmak Mahila Manch emerges as a catalyst for gender equality, fervently advocating the principles of SDG 5 in the Salt Block of Almora District, through empowerment of women via Self-Help Groups (SHGs), financial inclusion and environmental conservation initiatives, this dynamic collective is reshaping the rural landscape.

Situated in the farthest corners away from district administration, the Salt Block of Almora District once thrived on traditional livelihoods. However, the economic dynamics shifted in the 1990s, leading to substantial migration of male youths to the cities. Recognising the need for change, women in these areas in collaboration with NGO Shramyog established Rachnatmak Mahila Manch in 2012 - a platform to address the shifting socio-economic landscape.



## THE WORK

Aligned directly with SDG 5, the initiative actively empowers women in both farm and non-farm based livelihoods in remote areas. The Soil & Water Conservation activities not only contribute to environmental sustainability, but also ensure that women play a vital role in shaping and safeguarding their communities.

## IMPACT ON THE COMMUNITY

The impact of Rachnatmak Mahila Manch is multifaceted. From financial empowerment, with a collective business turnover of Rs 18 lakh in 2022, to environmental conservation with six rejuvenated water bodies, the Manch's initiatives touch every aspect of community well-being. The campaign "आओ मिलकर करें संवाद" led to significant representation of women in local governance, highlighting the initiative's impact on political empowerment.

Economic challenges and dependence on third parties for agricultural loans have diminished, thanks to the collective strength of the group. In the 800 families within the group, kitchen gardens have become a source of essential nutritive produce, thus contributing to the family's health. Simultaneously, the rejuvenation of six water sources is enhancing environmental sustainability and community well-being.



## FUNDAMENTAL CHALLENGES

Rachnatmak Mahila Manch addresses the fundamental challenge of shifting economic dynamics and migration, recognising the need for empowering women in these rural areas to fill the void and drive holistic development.

The innovative approach lies in the multifaceted initiatives, blending SHGs financial inclusion and comprehensive training. The inclusion of Soil & Water Conservation activities showcases an environmental consciousness, a key innovation that ties economic empowerment with sustainable environmental practices.



## SUSTAINABILITY & FUTURE PROSPECTS

The collective livelihood activities spearheaded by Manch aren't merely sustainable- they form the bedrock of the cooperative. With Sharmyog NGO providing facilitation and handholding support, the cooperative's longevity is ensured. Their financial inclusion approach, starting with monthly savings of Rs 10 per member has resulted in a substantial total savings of around Rs 50 lakh.

With 1200 active women engaged in 120 SHGs, the initiative has demonstrated its potential for expansion. Collaboration with UCOST for environmental conservation activities and the rejuvenation of six water sources further showcases scalability and the potential to impact more regions.

The Manch isn't just cultivating crops; they are nurturing empowerment and equality. By embodying the principles of SDG 5, the collective is not only transforming the lives of women in remote areas but creating a ripple effect that resonates across sectors, fostering sustainable development and gender equality in the hills of Almora.





## CLEAN WATER & SANITATION

Aims to ensure universal access to safe and affordable drinking water, sanitation and hygiene, ending open defecation and improving water quality and water-use efficiency and to encourage sustainable abstractions and supply of freshwater





# NAULA Foundation

Bhimtal,  
Nainital



In Bhimtal, Nainital, the Naula Foundation emerges as the guardian of Uttarakhand's precious water resources, seamlessly blending ancient wisdom with modern science to champion Sustainable Development Goal 6 (SDG-6). With their innovative Himalayan Declaration of Springshed Rejuvenation, the foundation has established the Naula Himalayan Wetlands & Springs Biodiversity Conservation Network.



## THE WORK

Since its inception in 2018, the Foundation has spearheaded the conservation of water resources in the Kumaon region with focus on rejuvenation of springs. Their collaborative approach involves a consortium of various stakeholders committed to preserving springs' biodiversity through traditional methodologies. Out of the 16,000 identified Naulas, 1,480 are earmarked for rejuvenation, spanning across four districts of Kumaon. The foundation's efforts

extend to the Ram Ganga and Gagas basin showcasing a comprehensive approach to water resource conservation.

Aligned with SDG 6, the Foundation actively contributes to the conservation and sustainable use of water resources. The focus on springs' rejuvenation addresses the broader goal of ensuring access to water and sanitation for all.



### FUNDAMENTAL CHALLENGES

The Foundation addresses the fundamental challenge of depleting water resources in the Kumaon region, recognising the need to blend traditional knowledge with modern science for effective conservation.



### IMPACT ON SPRINGS REJUVENATION

The impact of Foundation's initiative is evident in the rejuvenation of 15 Naulas in Almora with five of them now revived and fully functional. The foundation has not only succeeded in restoring these vital water sources but has also cultivated a dedicated team of volunteers and community members trained to sustain these efforts. Some rejuvenated Naulas now produce approximately 5,000 litres of water per day thus augmenting the water availability in the region in a tangible and effective way.





An innovative approach lies in the collaborative effort involving stakeholders and the use of traditional methodologies. The Himalayan Declaration of Spring shed Rejuvenation reflects a forward thinking strategy that combines ancient wisdom with modern solutions.

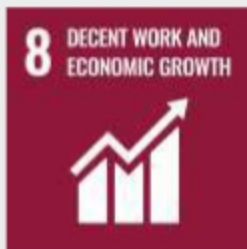
## SUSTAINABILITY & FUTURE PROSPECTS

Achieving sustainability in springs' rejuvenation is no small feat, and the Foundation recognises the complexity of the task. To ensure longevity, the foundation collaborates with esteemed institutions such as the G.B. Pant Institute of Himalayan Environment and IIT Roorkee's Hydrology Department.

The foundation's approach to rejuvenating springs is scalable and they have a well-documented plan to expand their impact. As they continue mapping, rejuvenating and maintaining springs, their efforts exemplify a model that can be replicated across regions, contributing to the broader goal of ensuring water sustainability.

'Naula Foundation' signifies the harmonious coexistence of tradition and innovation preserving Uttarakhand's water resources for generations to come. By aligning with SDG-6, the foundation is not just rejuvenating the springs; they are nurturing a sustainable future where water flows freely and nourishes the land and its people.





# DECENT WORK & ECONOMIC GROWTH

Recognises the importance of sustained economic growth and high levels of economic productivity for the creation of well-paid quality jobs, as well as resource efficiency in consumption and production





# Uttaranchal Youth & Rural Development Centre

Ghes Village,  
Chamoli



In the secluded Ghes village of Chamoli, the 'Uttaranchal Youth and Rural Development Centre' exemplifies the essence of Sustainable Development Goal 8 (SDG 8) by cultivating medicinal herbs, particularly Kutki. This transformative initiative started in 2005 with 32 farmers, has burgeoned to involve approximately 300 farmers, and is generating significant economic returns besides stemming the tide of migration.



## THE WORK

The heart of this initiative lies in the cultivation of medicinal herbs, specifically Kutki, in the challenging terrain of Ghes village. Situated 27 Km away from the roadside, the village's geographical constraints make growing other cash crops unviable. Commencing operations in 2005 with 32 farmers, the initiative has blossomed, engaging around 300 farmers who now earn an impressive 1-2 lakhs per annum. This success story has not only reversed migration but has enticed approximately 50

young individuals to return to Ghes and participate in Kutki cultivation. The tripartite agreement involving the farmers, the organisation, and the buyer Dhawan International, coupled with scientific expertise ensures the initiative's success.

Aligned with SDG 8, the initiative focuses on decent work and economic growth by providing sustainable livelihoods for farmers in Ghes village. The economic returns and reversal of migration contributes to the broader goal of fostering prosperity and sustainability.

“

### FUNDAMENTAL CHALLENGES

The initiative addresses the fundamental challenge of economic viability in challenging terrains, showcasing a model for cultivating cash crops like Kutki in regions where other crops may not be viable.

”

## IMPACT ON THE COMMUNITY

The impact of this initiative resonates across Ghes village and beyond. The economic transformation is evident with 300 farmers reaping the benefits of Kutki cultivation, each earning 1 to 2 lakhs per annum. Moreover, the initiative has become the reason for reversing migration, drawing back approximately 50 youths who are now actively engaged in cultivating Kutki.

The Centre's capacity to address comprehensive needs and tap into the market positions it as a scalable and replicable solution. Its success story holds the promise of inspiring similar endeavours, creating a network of sustainable agricultural practices contributing to poverty alleviation on a broader scale.





## SUSTAINABILITY & FUTURE PROSPECTS

Sustainability is the hallmark of this initiative. Since its inception in 2005, the initiative has thrived. The economic viability, coupled with the absence of pesticides or chemical inputs, reiterates the initiative's commitment to sustainable practices. The agricultural land is optimally utilised for earning a livelihood, making it a model of sustainability in action.

With its proven success, the initiative holds significant potential for scalability. The model, which effectively utilises challenging terrains for cultivating medicinal herbs, could be replicated in other villages facing similar constraints.

In conclusion, The Uttaranchal Youth and Rural Development Centre's initiative transcends mere cultivation; it symbolises the empowerment of communities and the rejuvenation of rural landscapes. By aligning with SDG 8, the initiative is not just cultivating Kutki; it is cultivating prosperity, sustainability and the promise of a thriving future for the people of Ghes village and beyond.







# INDUSTRY, INNOVATION & INFRASTRUCTURE

Calls for building resilient and sustainable infrastructure and promotes inclusive and sustainable industrialisation. It also recognises the importance of research and innovation for finding lasting solutions to social, economic and environmental challenges





# Promotion of Traditional Crops-Millet

Pithoragarh

Mrs. Devki Devi



In the secluded landscapes of Pithoragarh, where tradition reverberates throughout the hills, Devki Devi has emerged as an unlikely but powerful champion of entrepreneurship. Her story unfolds from the early 2000s, when she embarked on a mission to not only preserve traditional crops, especially millets, but also to weave a tale of self-reliance, reverse migration, and economic empowerment casting a lasting impact on the women of Uttarakhand.



## THE WORK

Devki Devi's visionary initiative began with a singular focus – the promotion of traditional crops with millets as the focal point. The fruits of her labour materialised in the form of Kumaon Namkeen, an entrepreneurial endeavour proudly utilizing the local crops. Beyond her personal success, she also passionately imparts wisdom to local women and budding entrepreneurs, nurturing a culture of self-sufficiency and business acumen.

Her journey not only aligns seamlessly with SDG 9, but also integrates SDGs 1, 3, and 8. Her commitment to traditional crops, epitomised by Kumaon Namkeen, propels local

economic growth, fuels innovation and opens avenues for self-employment, embodying the essence of sustainable development.

At the heart of Devki Devi's venture lies an unwavering commitment to sustain traditional crops. Through Kumaon Namkeen, she ensures not just market viability but a lifeline for income generation – a sustainable cycle for herself and those under her tutelage. This commitment extends further to sharing knowledge and skills within the local community, creating a self-sustaining ecosystem of prosperity.





## IMPACT ON THE COMMUNITY

Her impact isn't measured merely in entrepreneurial success but in the elevation of Kumaon Namkeen as a nationally recognised brand. Her motivational and extraordinary journey serves as a catalyst in inspiring women and girls across Uttarakhand. In her wake, reverse migration gains momentum, livelihood activities flourish, and a spirit of self-employment takes root.

## SUSTAINABILITY & FUTURE PROSPECTS

Her initiative exemplifies the promotion of traditional crops and establishment of successful enterprises which serves as a guiding model for others to emulate. With her fervour for training local women and aspiring entrepreneurs, the initiative is poised to transcend regional boundaries, contributing to the broader mission of fostering entrepreneurship and preserving traditions.



## RECOGNITION AND AWARDS

Devki Devi's contributions are etched in awards - a recognition of the profound impact of her work. From the National Micro Entrepreneur Award 2004 to the Nanda Shakti Samman 2022, each accolade acknowledges her role in shaping Uttarakhand's entrepreneurial landscape.

In conclusion, her journey unfolds as a tale of entrepreneurship, sustainability and tradition. In aligning with SDG 9, she not only fosters technological innovation but also propels economic growth, leaving behind a legacy of empowerment and inspiration for the women and girls of Uttarakhand.





# RESPONSIBLE CONSUMPTION AND PRODUCTION

Calls for a comprehensive set of actions from businesses, policy-makers, researchers and consumers to adapt to sustainable practices. It envisions sustainable production and consumption based on advanced technological capacity, resource efficiency and reduced global waste





# Raigi Gram Panchayat

Tyuni Tehsil,  
Dehradun

Mr. Ratan Singh



Nestled along the banks of the Tons River, the Raigi Gram Panchayat is making waves with its innovative waste management initiative, setting a remarkable example of responsible environmental practices. Inaugurated in 2021, the Waste Collection and Segregation Unit in Raigi have significantly curbed pollution in the Tons River, transforming the village into a model of sustainability.



The Gram Panchayat's commitment to sustainable waste management is evident in its comprehensive approach. Positioned as a model village, the Waste Collection and Segregation Unit established in 2021, not only tackles the issue of improper waste disposal but also contributes to river conservation. This aligns seamlessly with the principles of SDG 12–Responsible Consumption and

Production, by addressing river pollution, reducing environmental and health risks and promoting sustainable practices in the challenging terrain of the hills. The Gram Panchayat's innovative strategy, including income generation through the sale of recyclable waste, serves as an exemplary template of responsible consumption and production, directly advancing SDG 12.

### IMPACT ON THE COMMUNITY

The Gram Panchayat's waste management initiative has transformed the Tyuni market located on the banks of the Tons River. Earlier, due to lack of proper waste disposal systems, waste was indiscriminately thrown into the river. Thanks to the efforts of Gram Pradhan Mr. Ratan Singh Chauhan and the entire community, this situation has changed. The Gram Panchayat now boasts of cleanliness, improved health, and a significant reduction in pollution in the Tons River and its vicinity. The concerted efforts result in the daily collection of approximately 2-2.5 quintals of waste, indicating a commendable reduction in waste accumulation.





## SUSTAINABILITY MEASURES

Raigi Gram Panchayat's waste management initiative is not merely a temporary fix but a blueprint for lasting sustainability. The established waste management infrastructure ensures the continuous practice of collection and segregation. Income generation from the regular sale of recyclable waste, coupled with community awareness and participation, solidifies the sustainability of this model. The Gram Panchayat's integration with other development initiatives further enhances its financial stability.

## SCALABILITY AND FUTURE PROSPECTS

The scalability of Raigi's waste management model holds promise for replication in other hill villages facing similar challenges. Collaborations with government bodies and NGOs could facilitate the expansion of this successful initiative. The Gram Panchayat's foresight and unwavering commitment to responsible waste management provides a notable framework for communities aspiring for sustainable development in the hills.

In conclusion, Raigi Gram Panchayat serves as a testament to the transformative power of community-led initiatives. By aligning with SDG 12, the Gram Panchayat not only manages waste effectively but also fosters a culture of responsible consumption and production, creating a sustainable and replicable model for other hill villages.



- **Waste Collection and Segregation Unit**

This dedicated unit showcases the Gram Panchayat's commitment to effective waste management, setting a new standard for other villages.

- **Recyclable Waste Income Stream**

By converting recyclable waste into a source of income, the Gram Panchayat has creatively addressed the economic aspect of waste management.





# CLIMATE ACTION

Seeks to implement the United Nations Framework Convention on Climate Change commitment to achieving a climate-neutral world by mid-century to limit global warming to well below 2°C - with an aim of 1.5°C - compared with preindustrial times





# Agrinet Food & Beverages Pvt. Ltd.

Chamoli



## INITIATIVE OVERVIEW

In the scenic landscapes of Chamoli, Agrinet Food & Beverages Pvt. Ltd. has emerged as a trailblazer, pioneering an innovative approach to sustainable agriculture. The organisation's transformative initiative revolves around the cultivation of lemongrass, strategically transforming once barren lands into fertile soil. This ground breaking effort not only aligns with SDG 13, Climate Action, but also offers employment and income opportunities, and a potent solution to combat land degradation.

Covering an expansive 75 acres, the initiative commenced in 2022 and set ambitious targets, aiming to produce 22 thousand litres of lemongrass oil and 10 thousand litres of by-products by 2023, with a processing plant situated in Ghingran village of Chamoli District.





## RELEVANCE AND IMPACT

The initiative's relevance extends across economic, social and environmental dimensions. It provides direct employment to 20 local women and generates income for around 200 farmers, addressing critical socio-economic challenges. Seasonal employment for 100 local women further enhances the initiative's impact. By converting barren lands into productive ecosystems, the initiative holds the promise of curbing migration, a prevalent issue in such areas.

## SUSTAINABILITY MEASURES

AgriNet Food & Beverages Pvt. Ltd. has implemented a comprehensive set of sustainability measures. The organisation's robust infrastructure, machinery, equipment and skilled staff ensure the consistent and long term production of lemongrass oil. The tripartite agreement with farmers stands out as a sustainable model, ensuring that converted barren lands continue to be a perpetual source of income. By avoiding the use of pesticides and chemicals, the organisation adheres to environmentally friendly practices.



## SCALABILITY AND FUTURE PROSPECTS

The scalability of the initiative is evident in its potential expansion to cover 250 acres across various villages. It has not only succeeded in creating immediate impact but has also laid the groundwork for replication. The organisation's visionary outlook extends beyond its immediate sphere of influence, contributing to a broader narrative of sustainable agriculture.

In conclusion, it's innovative initiative addresses the critical issue of land degradation while exemplifying how sustainable agriculture can drive economic growth and environmental conservation. Through their commitment to SDG 13, the organisation stands as a beacon, inspiring others to embrace regenerative and responsible agricultural practices. Despite challenges, the initiative serves as a model for scalable and sustainable solutions in the realm of climate action and land rejuvenation.



- **Barren Land Conversion:** It's approach focuses on creatively transforming barren lands into arable soil, employing a tripartite agreement with local farmers. This innovative model is central to the organisation's commitment to sustainable agriculture.
- **Lemongrass Cultivation:** The cultivation of lemongrass is a distinctive and environmentally friendly innovation. Lemongrass not only serves as a valuable resource for producing oil but also acts as a natural deterrent for pests, aligning with the principles of eco-friendly and sustainable practices.
- **By-Product Utilisation:** The organisation's strategy includes the conversion of leftover lemongrass into fodder, showcasing a comprehensive and efficient use of resources. Plans for exporting lemongrass oil and trials of Camomyle in Van Panchayat land add layers of innovation to their initiative.



# Shipra Kalyan Samiti

Nainital

Mr. Jagdish Singh Negi



In the heart of Nainital District, the Shipra Kalyan Samiti emerges as a stalwart guardian of the environment, dedicating its unwavering efforts to the vital issue of Climate Action of SDG 13 with the primary focus on the cleaning and rejuvenation of the Shipra River. Mr. Jagdish Singh Negi and the volunteers of the Samiti actively engage in forest fire prevention and water source rejuvenation, embodying the spirit of climate resilience.



## THE WORK

The commitment of Shipra Kalyan Samiti to SDG 13 is demonstrated through a range of impactful initiatives. Central to their efforts is the cleaning and rejuvenation of the Shipra River, a crucial lifeline for the region. Enlisting the active participation of over 30 local volunteers, the Samiti takes proactive measures in forest fire prevention, particularly through the proper disposal of pine leaves (Pirul). Key initiatives include the construction of 250 Khanti and Chal Khaal structures, strategically designed to enhance water levels in the Shipra River catchment area. Adding to the sustainability of the environment, the creation of 10 ponds aligns seamlessly with the broader goal of climate action.



The active involvement of 30 volunteers underscores the community-driven nature of the initiative, emphasising the collaborative effort necessary for climate resilience. Prestigious awards, such as the **Sundarlal Bahuguna Vriksh Mitra Purushkar 2023** and **Jyotirmath Puruskar 2022** stand as testament to the significance of their contributions.

The sustainability of Samiti's initiatives finds its roots in the well-deserved recognition at the district and authoritative levels. The construction of Amrit Sarovar and the systematic removal of Pirul for forest fire prevention contribute significantly to the enduring impact of their efforts.



### SCALABILITY AND CHALLENGES

While the initiatives of Shipra Kalyan Samiti serve as an inspiring narrative for others, scaling up the programme in other areas or rivers presents its unique set of challenges. The necessity for technical expertise and funding makes expansion a complex undertaking. Nevertheless, the Samiti's journey is an inspiration for other communities to embark on similar climate action initiatives.

In conclusion, the Samiti exemplifies the spirit of climate action, weaving a narrative of community-driven environmental stewardship. Their initiatives for Shipra River's cleaning and rejuvenation, coupled with forest fire prevention measures, resonate with the essence of SDG 13. As they navigate challenges and garner recognition, the Samiti paves the way for a sustainable and resilient future in Nainital District.







## LIFE ON LAND

Focuses specially on managing forests sustainably, halting and reversing land and natural habitat degradation, successfully combating desertification and stopping biodiversity loss





# बांज बचाओ बांज लगाओ

Nainital

Mr. Chandan Singh Nayal



In the heart of Okhalkanda Block, Mr. Chandan Singh Nayal emerges as a preserver of the environment, leading the charge with the "बांज बचाओ बांज लगाओ" campaign. His tireless efforts have transformed barren lands into a flourishing mixed forest, where over 60,000 trees stand tall and thousands of check dams weave a network of water conservation. Nayal's initiative not only aligns with SDG 15, 'Life on Land' but also serves as a powerful testament to the impact of grassroots action in fostering biodiversity and water conservation.

A Diploma holder in Engineering from Polytechnic College, Lohaghat, he took a detour from his teaching career in 2017. Witnessing the devastating consequences of a massive forest fire during his vacation at home in Nai Gram, Okhalkanda, he decided to return to his village and dedicate his time to environmental causes.





## THE WORK

Nayal's initiative spans a 5-hectare area, where he has meticulously planted over 60,000 trees. The "बांज बचाओ बांज लगाओ" campaign focuses on tree plantation for water conservation, featuring a nursery with diverse plant

species and an ambitious goal of planting 30,000 Baans saplings. Beyond tree planting, Nayal's efforts encompass the construction of around 5,000 Chal Khal (Check Dams) and the revitalisation of water sources.





## SUSTAINABILITY ANCHORS

Nayal's initiative exhibits a high level of sustainability, hosting diverse plantations, including fruits and native species. Apart from contributing to biodiversity, the project generates income through the sale of nursery plants. Sustainability is further fortified by the careful selection of plant species, ensuring ecological resilience.

Nayal's initiative extends beyond Okhalkanda Block, with his involvement in similar programmes in other districts of Uttarakhand. Recognised for his expertise, Nayal has received appreciation from the Hon'ble Prime Minister during "Mann ki Baat" and the prestigious **Water Hero Award** from the Ministry of Jal Shakti, Government of India. This recognition positions his initiative as a replicable model for different regions.

His "बाँज बचाओ बाँज लगाओ" campaign highlights the transformative impact of grassroots initiatives. Aligned with SDG 15, Nayal rejuvenates barren lands, ensuring sustained water availability and significantly contributes to the preservation of life on land. His work serves as a shining example of how individuals can drive positive change, inspiring others to join the mission of biodiversity conservation and sustainable water management. According to Nayal, his primary focus remains on water resources and water bodies, emphasising the critical role of conservation efforts in preserving hill biodiversity.

*"Garnering consistent community involvement, especially during the initial stages, proved challenging and required persistent efforts to build trust and understanding. But now most of the activities are carried by the community especially women self-help groups in the village"*

— Chandan Singh Nayal



- Tree plantation for water conservation.
- Nursery development with diverse plant species.
- Planting and protecting over 60,000 trees, distributing more than 50,000 plants.
- Plantation on various types of land, including Van Panchayat forest, Reserve forest, civil land and wasteland.
- Construction of approximately 5,000 Chal Khal.





# PEACE JUSTICE & STRONG INSTITUTIONS

Calls for peaceful and inclusive societies based on respect for human rights, protection of the most vulnerable, the rule of law and good governance at all levels. It also envisions transparent, effective and accountable institutions





# Darpan Samiti

Almora

Ms. Vibhu Krishna



In 2011, Vibhu Krishna, driven by a passion for stage plays and street performances (Nukkad Nataks) laid the foundation of Darpan Samiti. This organisation with its roots deeply embedded in the picturesque landscapes of Almora has evolved into a catalyst for positive societal change, particularly focussing on SDG 16.



## THE WORK

Darpan Samiti's inception was spurred by Vibhu Krishna's commitment to working with the youth of the district while simultaneously promoting the arts through theatre and street plays. With five distinct verticals encompassing

theatre and folk programmes, audio-visual productions, training initiatives, tourism programmes and events, the organisation has left its cultural footprint across 15 states by providing a platform for the youth of Almora.



## COUNSELLING AND CULTURAL RESONANCE

Beyond the spotlight, the Samiti extends its reach through counselling sessions, recognising and addressing prevalent challenges. Vibhu Krishna identifies drug abuse among hill youth as a significant concern, one that the organisation tackles through proper guidance and counselling.

## RELEVANCE AND IMPACT

The organisation's relevance is evident in its response to challenges like reverse migration, livelihood activities, education and cultural awareness. The tangible impact is witnessed in the training of 478 youths, with nearly 470 finding employment. The Samiti's involvement in Government Training Programmes and social awareness campaigns affirms its commitment to multiple SDGs, creating a ripple effect across SDG 3, 5, 6, 8, and 16.

Beyond regional confines, the Samiti's initiatives demonstrate scalability and replicability. Their influence extends beyond training youth, impacting government departments, and raising social awareness. Recognition through awards, including **Uttaranchal Ratan 2021** and **Uttaranchal Deep** at district, state and national levels, attests to the organisation's effective approach.





The Samiti's initiative revolves around a multifaceted approach to social awareness. This includes cultural programmes, theatrical performances and audio-visual productions. The organisation not only offers one-to-one counselling but also provides training and support for marginalised groups, including dropouts. Notably, their impact extends to government departments through training programmes covering various schemes and social issues.



# Creative Attempts in Rural Development Society (CARD)

Pithoragarh

Mr. Subhash Chandra Pangaria



Nestled in Pithoragarh, a border district sharing boundaries with China and Nepal, the challenges of human trafficking, gender discrimination and violence persist. In response to these sensitive issues, Creative Attempts in Rural Development Society (CARD) emerged in 1999 under the guidance of Mr. Subhash Chandra Pangaria. Their mission focussed on championing rural development, child rights, education, health and women empowerment through the formation of women self-help groups.



## THE WORK

CARD's multifaceted initiative aptly named Creative Attempts in Rural Development Society (CARD), tackles the critical issues of human trafficking, gender discrimination, and violence. At the heart of their efforts lies the Ujjwala Punarwas Centre, a sanctuary for education and rehabilitation, situated strategically in the tumultuous border

region dealing with cross-border cases of workers from Nepal.

The Ujjwala Punarwas Centre has played a pivotal role in the region's social fabric, registering 385 cases over the past 5 years and successfully rehabilitating 377 individuals, including 120 Indians and 257 Nepali nationals. The transit centre at the Nepal border in Jhulaghat, Pithoragarh District acts as a crucial checkpoint in the ongoing battle against these societal menaces.





## RELEVANCE AND IMPACT

CARD confronts sensitive human trafficking cases with empathy, such as that of a mother who sold her three children aged 14, 11 and 7. The timely intervention of the anti-human trafficking team, prompted by a vigilant neighbourhood, resulted in the rescue of the children who got refuge at the Punarwas Centre. Beyond statistics, CARD's impact extends to heightened community awareness, fostering a more informed and vigilant society.



## SUSTAINABILITY MEASURES

The sustainability of CARD's endeavours is rooted in ongoing efforts and crucial support from Government and Corporates under Corporate Social Responsibility.

## SCALABILITY AND RECOGNITION

CARD's success is not confined to the borders of Pithoragarh; its sustainable and replicable initiatives hold the potential to combat similar challenges in other regions.

In conclusion, Creative Attempts in Rural Development Society (CARD) stands as a testament to the transformative power of grassroots initiatives in addressing complex societal issues. Their unwavering commitment to SDG 16 fosters a safer and more just society along the borderlands of Pithoragarh.

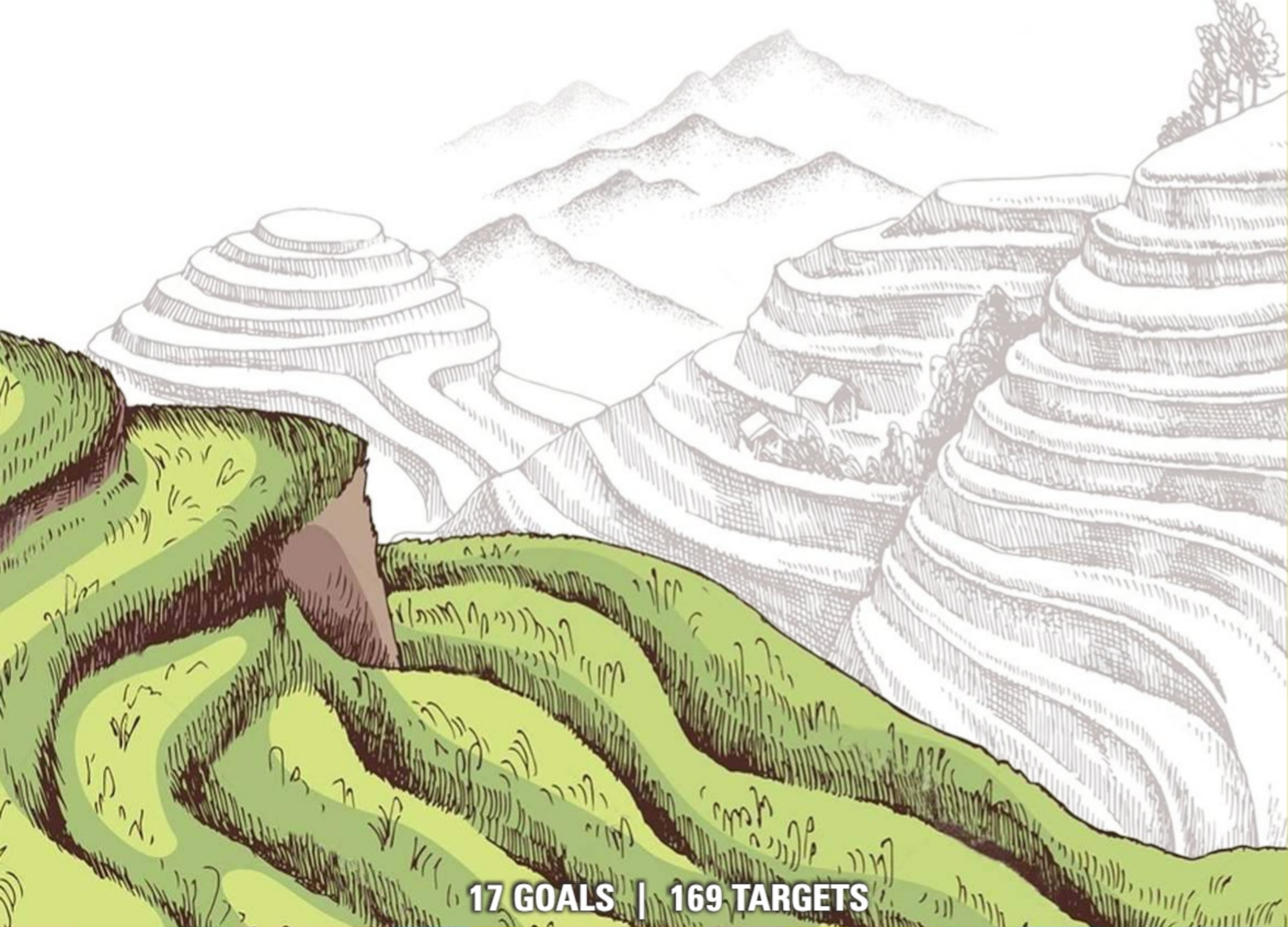


- **Prevention and Reduction Efforts:** CARD actively engages in initiatives aimed at preventing and reducing instances of human trafficking, gender discrimination and violence within the Pithoragarh border region.
- **Ujjwala Punarwas Centre:** At the heart of their operations, the Ujjwala Punarwas Centre serves as a crucial hub for education and rehabilitation. This Centre provides a safe haven for individuals affected by human trafficking, gender-based discrimination and violence.
- **Rehabilitation Services:** A core aspect of CARD's initiative involves the successful rehabilitation of individuals impacted by trafficking. Over the past 5 years, the organisation has addressed and rehabilitated 376 cases, contributing to new beginnings for the affected.
- **Transit Centre at Nepal Border:** Strategically positioned at the Nepal border in Jhulaghat, Pithoragarh District, CARD operates a transit Centre that acts as a frontline defence against cross-border cases, particularly those involving workers from Nepal.









**17 GOALS | 169 TARGETS**